

# COVID-19 Update for the Frederick County Board of Education

Colin M. Greene, MD, MPH  
Health Director, Lord Fairfax Health District  
Virginia Department of Health  
11 August 2020



# Points to Keep in Mind: Natural Course

- COVID-19 is a disease of **proximity**
  - Spread by moist droplets from mouth or nose
  - Inhaled or by contact of contaminated surface
  - Spread increase with **closeness** and **frequency** of contact
- COVID is **deadly** to the **elderly**
  - Not to children (0 COVID deaths in VA < 20 y/o)
- You can spread COVID without knowing you have it
- Source of every new infection is someone's **mouth** or **nose**

# Contagion



# Contagion



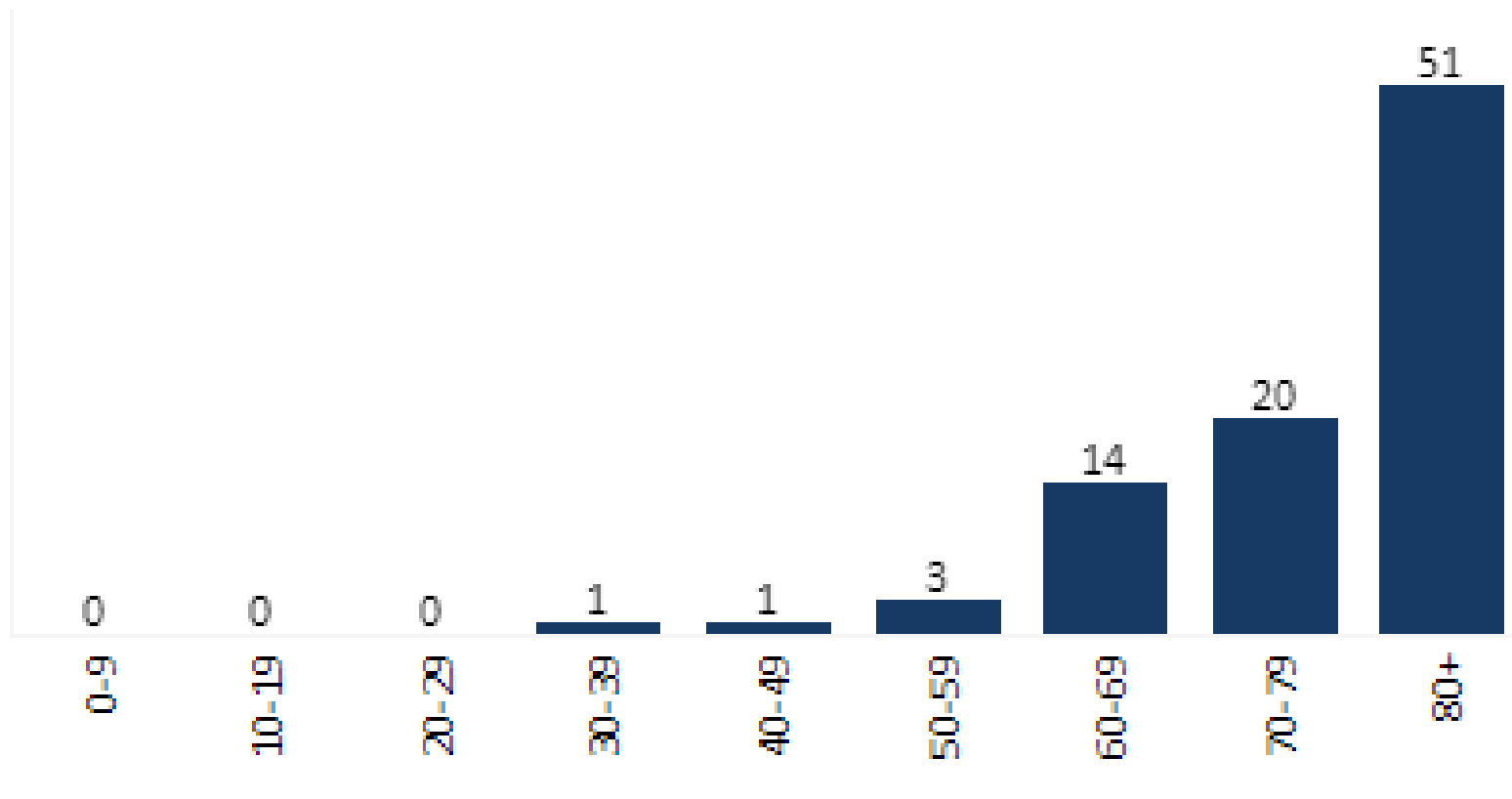
# Contagion



# LFHD Death Rate By Age

## Deaths by Age Group - Lord Fairfax

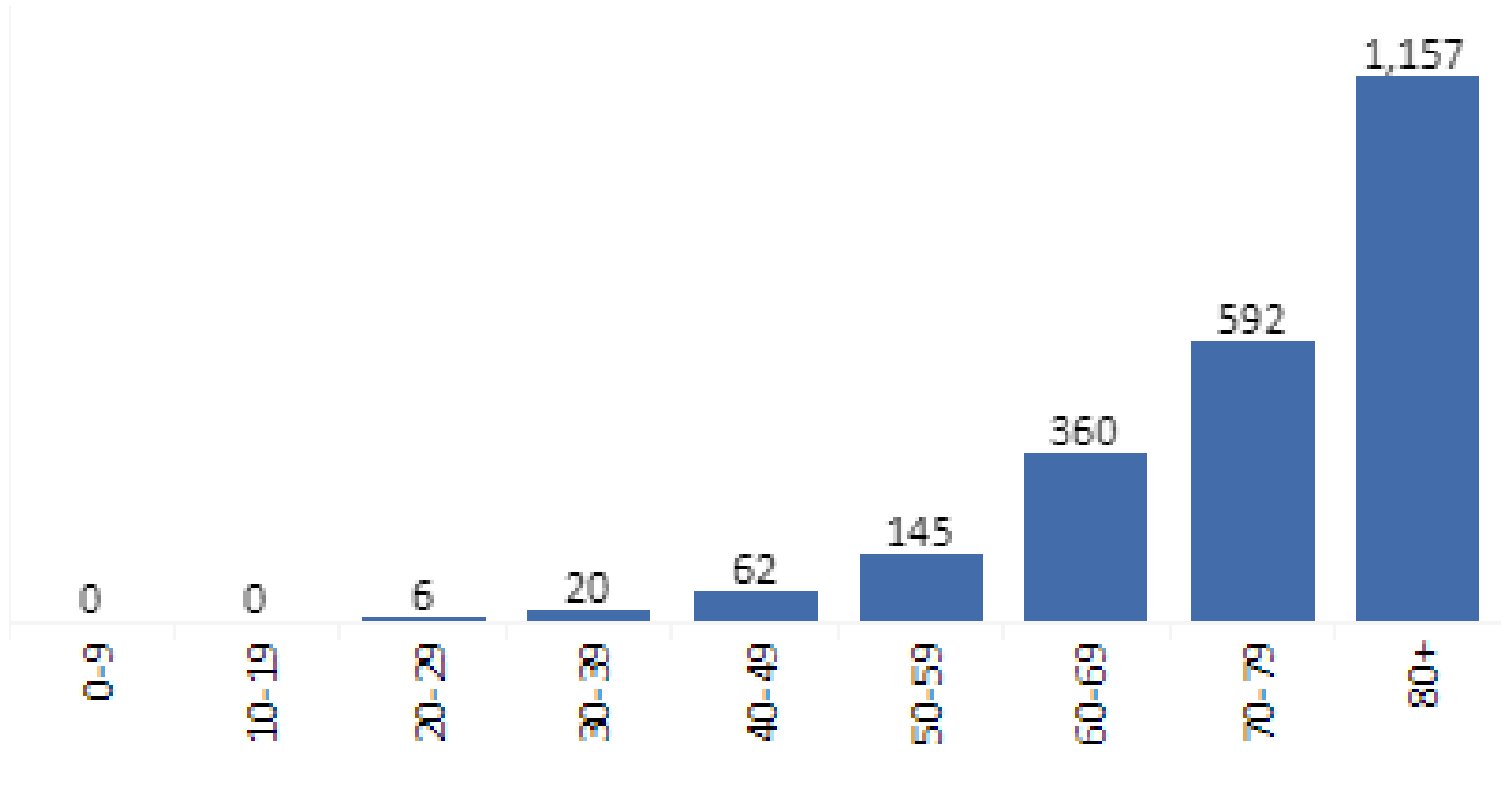
Not Reported: 0



# Virginia Death Rate By Age

## Deaths by Age Group - Virginia

Not Reported: 2



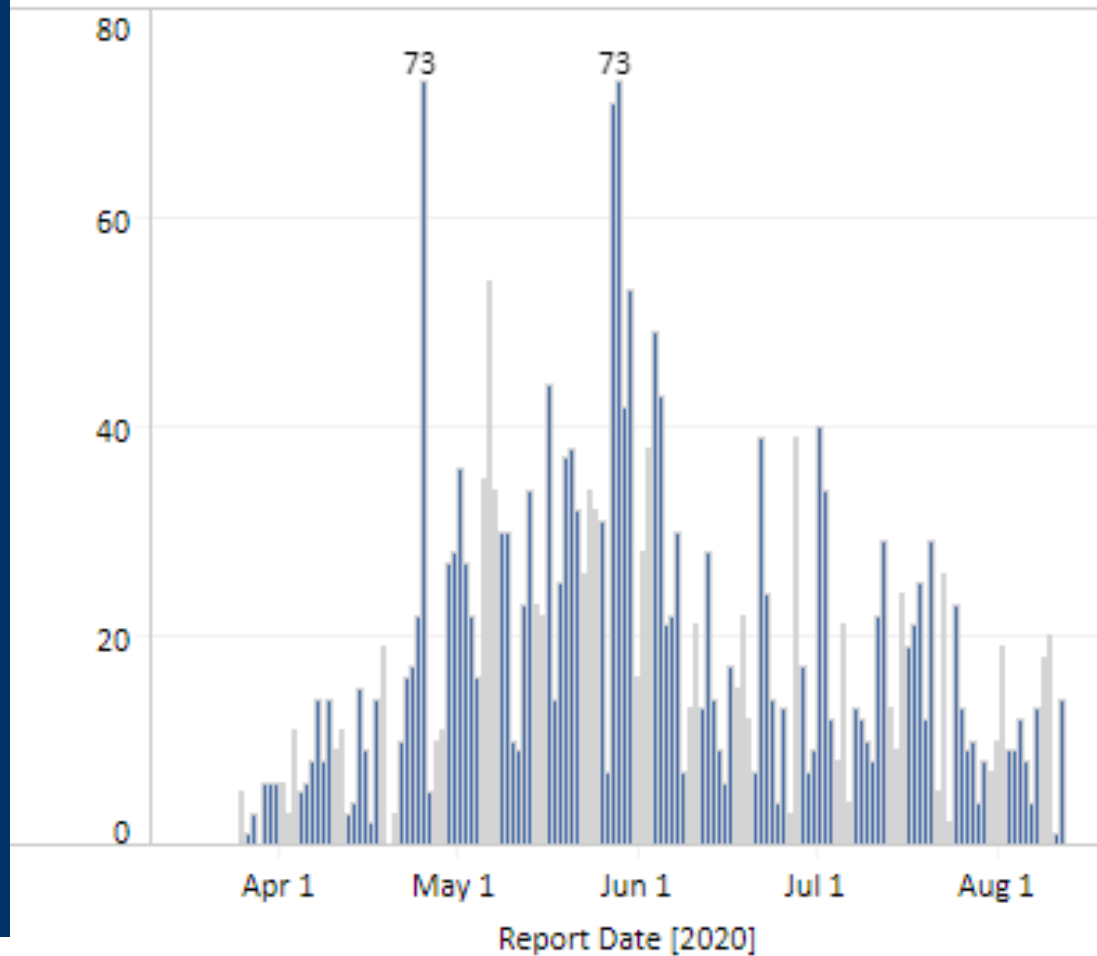
# Other Key Data

- Case and death rates nationally are back on a downward trend (last 2 weeks)
- Virginia's case spikes mostly in SE and SW
- LFHD has not seen a major case spike
- Northwest region (and Frederick County and Winchester in particular) rated at Low Burden/Low Community Transmission
- There is potential harm in keeping children out of school (loss of socialization; missed domestic abuse; missed education milestones, etc.)

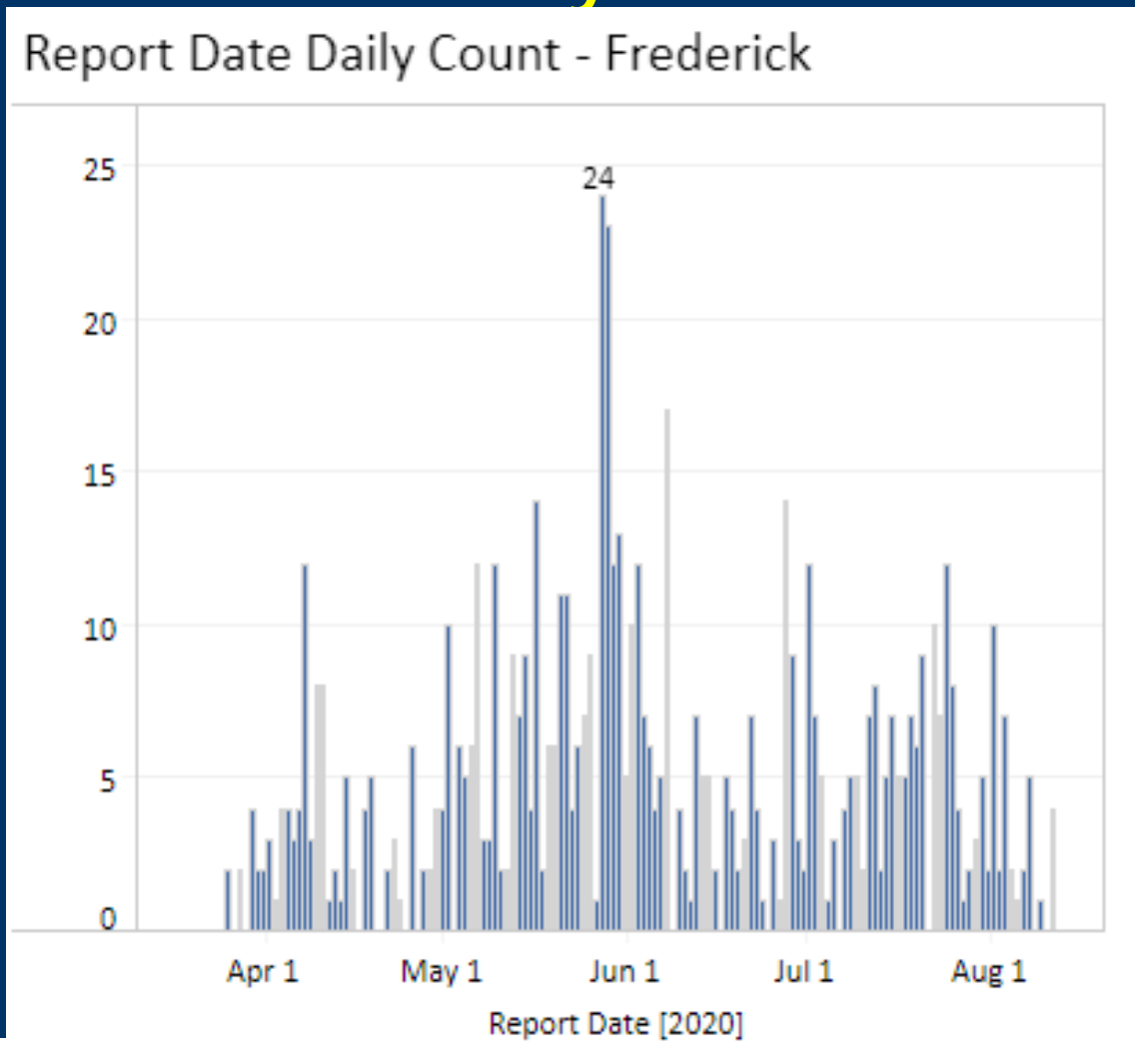


# LFHD Daily New Cases

Report Date Daily Count - All Localities



# Frederick Daily New Cases



# Points to Keep in Mind: Prevention

- **Masking:** covering mouth and nose.
  - Catches outbound moist droplets by capillary action.
- **Distancing:** droplets disperse over space
  - Farther is better; 6 feet recommended
  - outside more effective than inside
  - Masking and distancing together most effective!
- **Hygiene:** hand washing/sanitizing; avoid touching face; sick should stay home
- **Sanitation:** clean commonly touched surfaces
- **Screening:** for symptoms and fever
  - Home, before bus, upon entry?
  - What do you do with those who screen positive?

# Points to Keep in Mind: Post-exposure

- Quarantine: for well people who were exposed
  - 14 days from last exposure
  - Minimize contact with others
  - Release after 14 days if no symptoms
  - If symptoms develop or positive test, move to “isolation”
- Isolation: for people infected with the virus
  - 10 days from onset of symptoms (+ test if no symptoms)
  - After 10 days, release from isolation if
    - No fever for 24 hours without anti-fever meds
    - Symptoms improved or gone
    - No need to re-test

# A Few Special Concerns for Schools

- You WILL have cases: plan ahead
- Main risk is older staff, not children
  - Plan for temporary staff loss from isolation & quarantine
  - Reason for closure?
- Space requirements due to distancing
  - Busses, classrooms, meal service, playgrounds
- Special programs
  - Music (wind-based)
  - Athletics: group team sports are a challenge (proximity)
  - Vocational (distance learning a challenge; sanitation of tools/equipment crucial)

# More Special Concerns for Schools

- Avoid sharing classroom materials
- Procedures for handling a child with symptoms
- Special equipment
  - Screening: scanner thermometers
  - School nurse: PPE, fit testing, testing supplies?
- Points of contact for care of sick
- Switch to online learning for quarantine/isolation
- Consider risk to vulnerable staff
  - Cohorting to online teaching, non-contact positions
  - Other HR measures

# Way Forward

- COVID will be with us for some months to come
- Live your lives, run your business, but
- Avoid crowds
- Keep distance where you can
- Wear a mask where you can't
- Wear a mask when indoors with others
- Refusing to wear a mask does not make a political statement...it just makes you selfish.
- It's not the "new normal"...it's just for a while...and we need to deal with it.

# Questions?

Thank you for your time.





# **2020-21 School Reopening Plan Update**

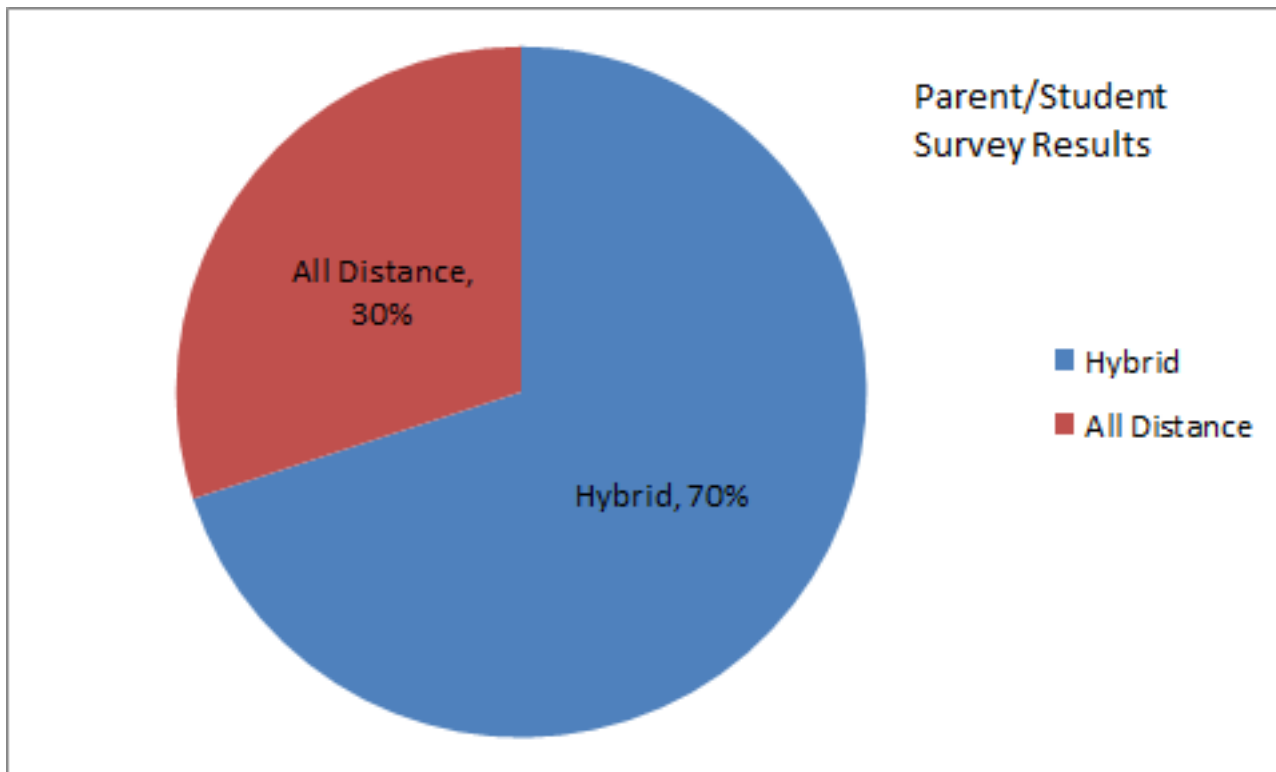
**Dr. David Sovine  
Superintendent of Schools  
August 11, 2020**

# School Reopening Plan Update

July 21 - School Board Adopts School Reopening Plan

- Hybrid/All Distance Learning Models Offered

Parents asked to select learning model by August 3.



# School Reopening Plan Update

Having 30% of students engaged in all distance learning helps all schools achieve recommended physical distancing requirements.

## Examples:

Sherando High School - Approximately 525 students/day

Admiral Byrd Middle School - Approximately 350 students/day

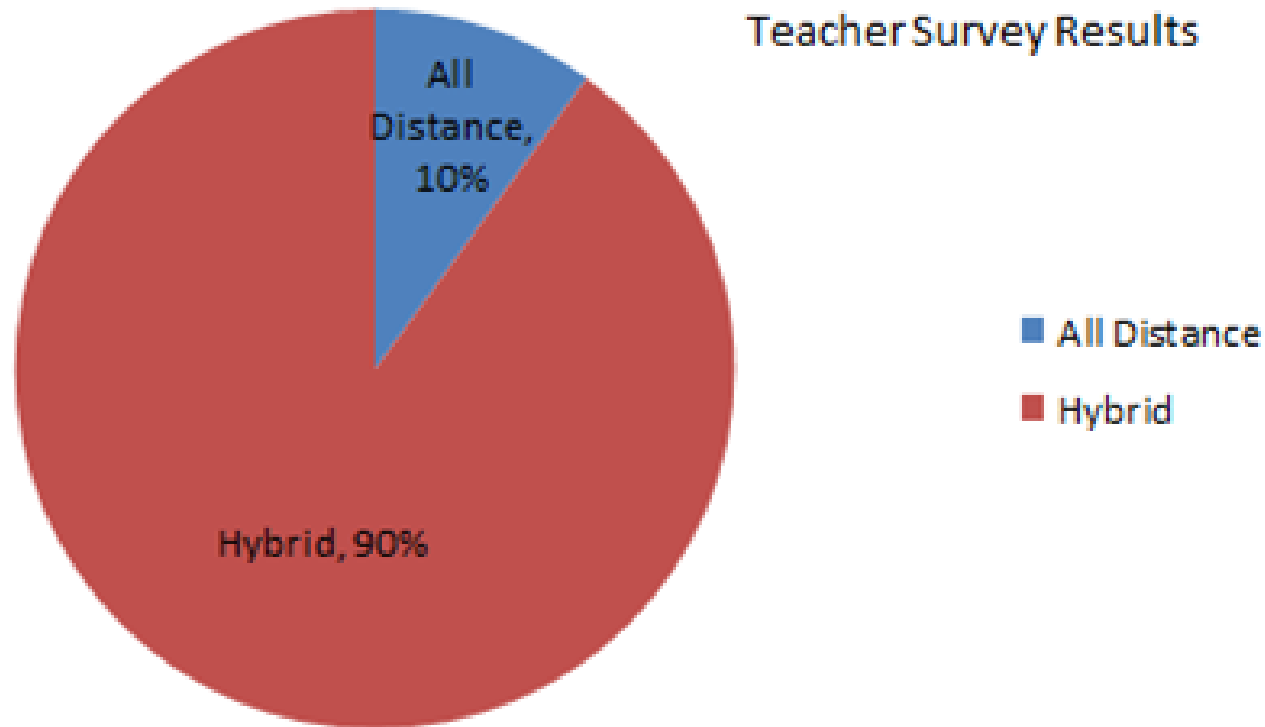
Greenwood Mill Elementary School - Approximately 210 students/day



# School Reopening Plan Update

Teachers surveyed to determine hybrid vs. all distance teaching preference.

Approximately 10% have verified medical/family issues requiring all distance teaching.



# School Reopening Plan Update

The number of teachers required to teach all distance due to medical/family issues presents significant challenges for the hybrid model.

- All middle and high schools and nearly half of elementary schools are significantly impacted by staffing challenges.
- How to offer full schedule of classes.



# School Reopening Plan Update

School-level administrator meetings held on August 4 and 6.

## *Purpose*

*To gather honest feedback from school-level leaders regarding our current reopening plan.*



# School Reopening Plan Update

## Scheduling Goals for Both Hybrid and All Distance Learning Models

- Provide reasonably comparable course offerings for both options.
- Provide teachers endorsed in the content they're teaching for both options.
- Establish schedules that will help ensure a smooth transition to a 100% in-person model when it's safe to do so.



# School Reopening Plan Update

## High Schools

- All teachers remain at their home schools to provide both hybrid and all distance instruction.
- Enable teachers who must teach from home due to medical/family issues to stream instruction live into classrooms.
- Enable teachers teaching in person at the school to stream instruction live to students engaged in the all distance learning model.
- Students on both the hybrid and all distance learning models will follow an A/B schedule and complete asynchronous assignments on non-in-person school days.





# School Reopening Plan Update

## High School Schedule

- All students will be on the A-Day/B-Day Schedule
- All students will follow their normal schedule on their assigned day
  - Mondays and Tuesdays will be Day 1
  - Thursdays and Fridays will be Day 2
  - Wednesdays are a Distance Learning Day for all students
- On their Distance Learning Day, all students will complete assignments requiring them to practice, apply, synthesize, and reflect on their learning



# School Reopening Plan Update

## Middle Schools

- All four middle schools will operate on a Virtual Academy Model or Hybrid Model
- Teacher resources will be shared across the four schools for the Virtual Academy
- Teachers who must teach from home due to medical/family issues will stream instruction live into classrooms.



# School Reopening Plan Update

## Middle School Schedules

- Students in the Hybrid Model will attend in person with a normal schedule on A days or B Days and participate in Distance Learning on their “off” days
  - Mondays and Thursdays are A Days
  - Tuesdays and Fridays are B Days
  - All students will participate in Distance Learning on Wednesdays
- On their Distance Learning Days, all students will complete assignments requiring them to practice, apply, synthesize, and reflect on their learning

*(Middle School schedules continued on next slide)*



# School Reopening Plan Update

## Middle School Schedules (Continued)

- Students in the Distance Learning Model will attend virtually four days per week (M, T, TH, and F) based on the following guidelines:
  - Students in Grades 6-8 will engage in a recommended 30 minutes of learning time per teacher daily (maximum of 2.5 hours per week) according to the student's schedule
- Students will be taught by teachers endorsed in the content area in which they are teaching, but may not be from the students' home school



# School Reopening Plan Update

## Elementary Schools

- All teachers remain at their home schools to provide both hybrid and all distance instruction.
- Certain teachers designated for hybrid instruction (combination of in-person and distance).
- Certain teachers designated for all distance instruction.



# School Reopening Plan Update

## Elementary Schedules

- Students in the Hybrid Model (Grades PreK-1) will attend in person four days a week (M,T,TH, and F)
- Students in the Hybrid Model (Grades 2-5) will attend in-person with a normal schedule on A days or B Days and participate in Distance Learning on their “off” days
  - Mondays and Thursdays are A Days
  - Tuesdays and Fridays are B Days
  - All students will participate in distance learning on Wednesdays
- On their Distance Learning Days, all students will complete assignments requiring them to practice, apply, synthesize, and reflect on their learning

*(Elementary schedules continued on next slide)*



# School Reopening Plan Update

## Elementary Schedules (continued)

- Students in the Distance Learning Model will attend virtually four days per week (M, T, TH, and F) based on the following guidelines:
  - Pre-K - 30 minutes daily;
  - K-Grade 2 - 60 minutes daily;
  - Grades 3-5 - 90 minutes daily (provided in developmentally appropriate segments depending on content and instructional goals).



# School Reopening Plan Update

## Technology Supports to be Offered

- All students will have access to FCPS Chromebooks.
- Making Internet hotspots and Comcast Essentials available for areas without Internet access (CARES Act Funds from Frederick County Government).
- A technology help desk will be provided for students and parents.
- Instructional videos for parents with topics to include supporting organizational skills, understanding “power standards” and resources for social/emotional supports.





# School Reopening Plan Update

## Next Steps/Ongoing Work:

- Continue developing students schedules.
- Health and safety training at all schools - August 17-28.
- Student schedules provided by schools the week of August 17.
- Complete FCPS School Services Survey on August 19 - Internet access, school meals, student transportation.
- Provide bus routes/schedules to students on the hybrid model at least one week before the start of school.



# School Reopening Plan Update

## Remaining Challenges:

- Develop and finalize a backup plan should technology resources become unavailable due to connectivity issues beyond the control of FCPS;
- Further develop plans for in-person lab experiences for students;
- Develop protocols to ensure students are participating in distance learning at the designated times (particular concern at elementary level);
- The challenges presented to teachers working in both the in-person and distance learning models.



# School Calendar Recommendation

On July 21, the School Board moved the first day of school for students from August 17 to August 31.

Recommendation to move start date to September 8:

- Allow additional planning to address complexities of the hybrid model;
- Allow parents more time to address childcare needs after receiving student schedules the week of August 17;
- Provide more time for health and safety training;
- Provide additional time to address remaining challenges/issues.



# School Calendar Recommendation

